

TOWN HOUSE



Travessa do Abarracamento de Peniche



10

8

6

A 19TH CENTURY TOWN HOUSE



REVISITED

BY AN ARCHITECT OF NOWADAYS



“Buildings are appealing because they tell us what they want, we have to take a long time to understand what they are asking from us.”

Architect Eduardo Souto de Moura

WITH A VISION OF THE FUTURE











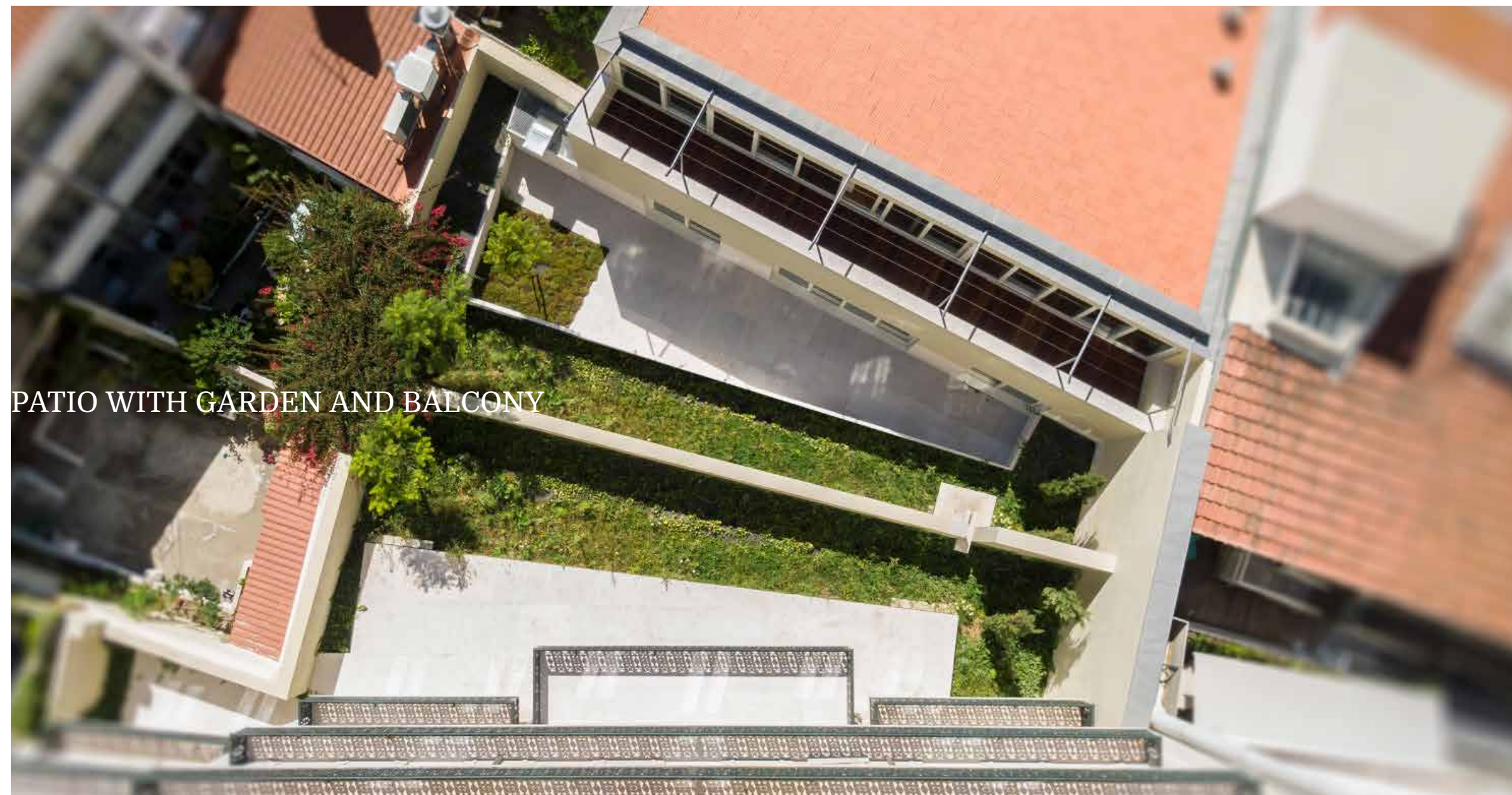








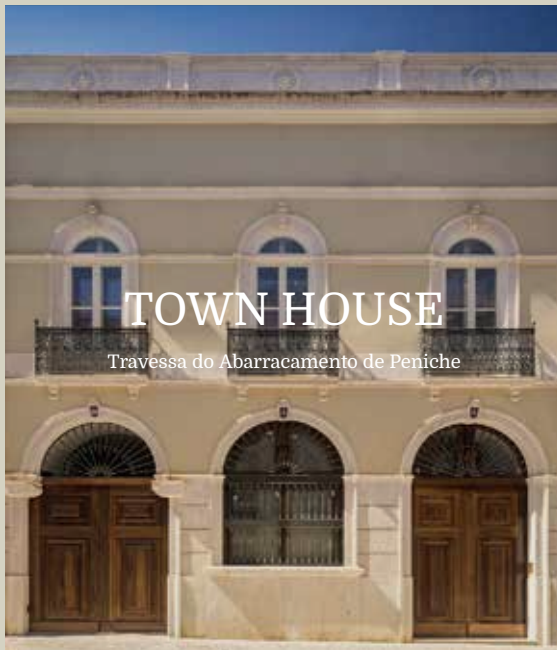




PATIO WITH GARDEN AND BALCONY



PARKING



TOWN HOUSE

Travessa do Abarracamento de Peniche

FARIA PALACE

Praça do Príncipe Real



TOWN HOUSE

Travessa do Abarracamento de Peniche

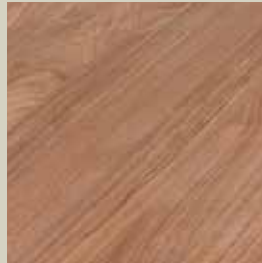
- Energy Certificate B
- Private lift: hydraulic homelift with capacity for 4 people (Greenlift)
- The garage features a WÖHR automatic parking system for 2 vehicles, including SUV'S and family-size vehicles. Has one electric charger per apartment
- Featured with digitalSTROM domotics system
- Private garden with fountain and terrace
- Concierge
- 24h security

MAIN FEATURES



TOWN HOUSE

Travessa do Abarracamento de Peniche



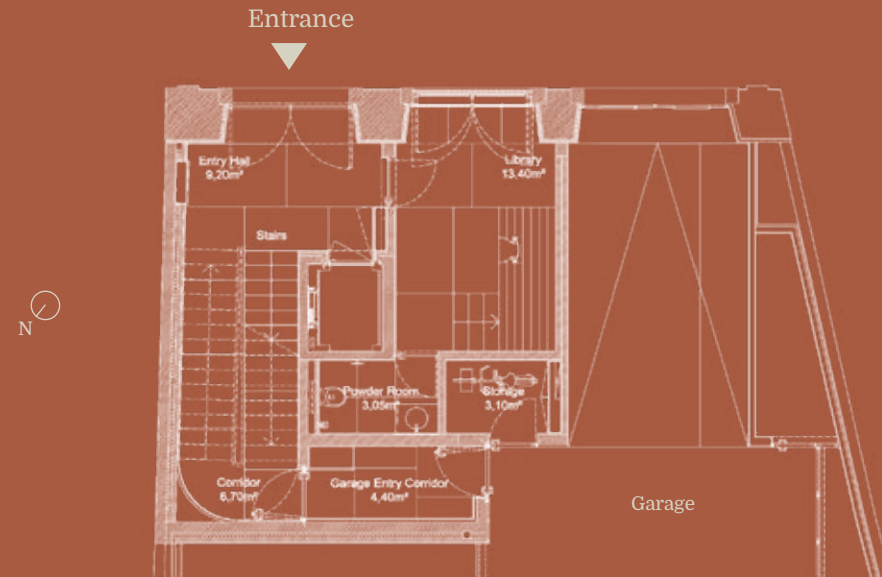
FINISHES

TOWN HOUSE

Travessa do Abarracamento de Peniche

GROUND FLOOR

PLANS

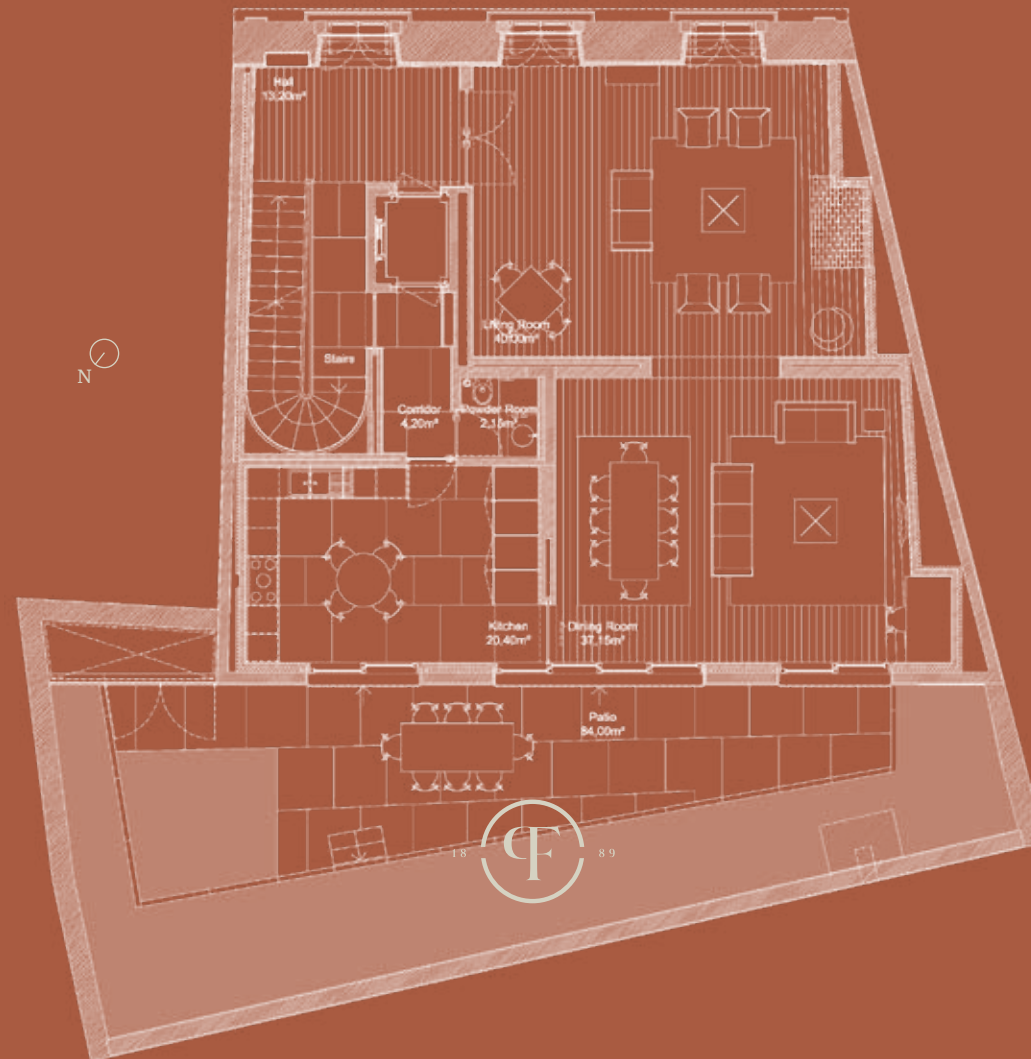


TOWN HOUSE

Travessa do Abarracamento de Peniche

FIRST FLOOR

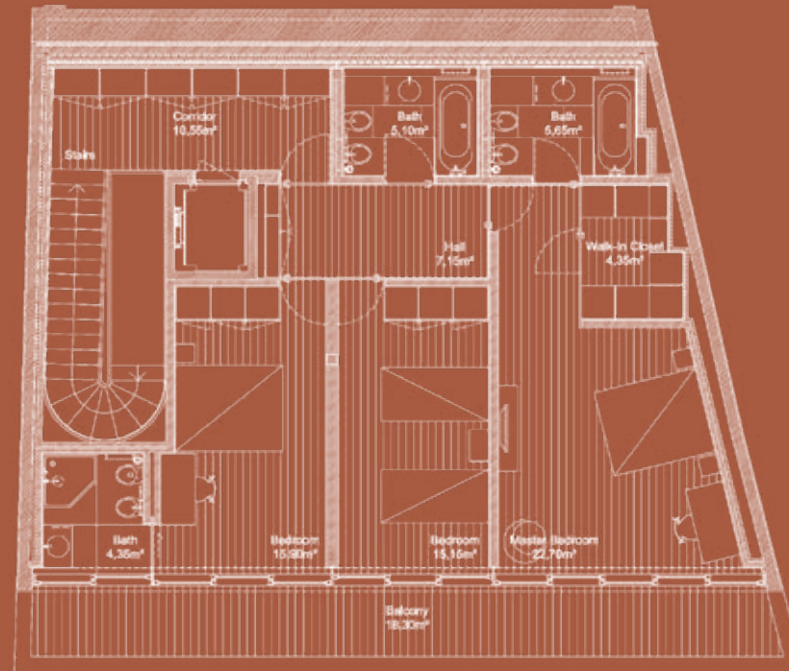
PLANS



TOWN HOUSE

Travessa do Abarracamento de Peniche

SECOND FLOOR

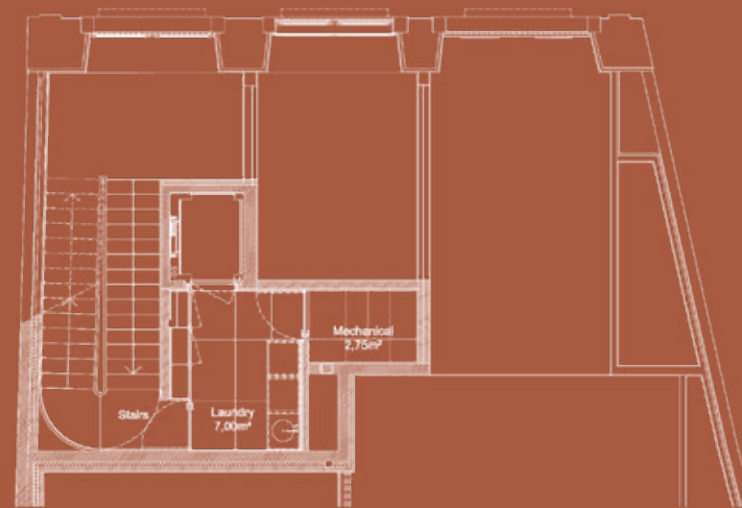


PLANS

TOWN HOUSE

Travessa do Abarracamento de Peniche

MEZZANINE FLOOR



PLANS



Sales

Filipa Valle Teixeira

T. +351 916 053 205

fvalle@eastbanc.com

General

T. +351 213 404 150

geral@eastbanc.com



www.fariapalace.pt



www.eastbanc.pt