

# PRAÇA DO PRINCIPE REAL 11

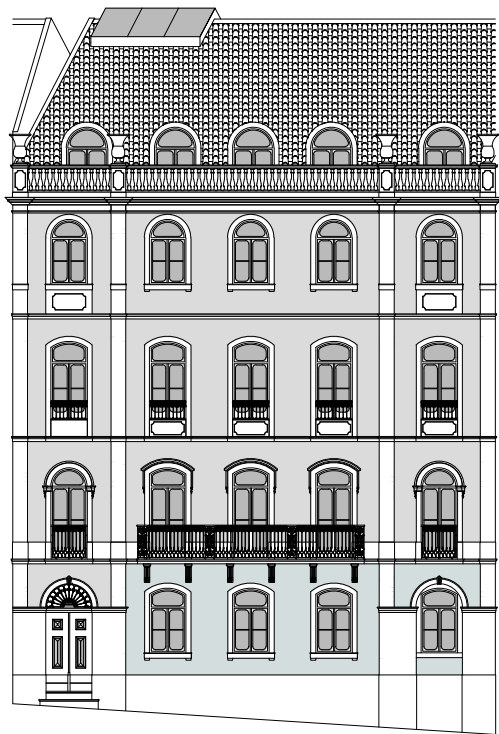
ground floor

interior area - 223,17 m<sup>2</sup> ( 57,88m<sup>2</sup> + 165,29m<sup>2</sup> )

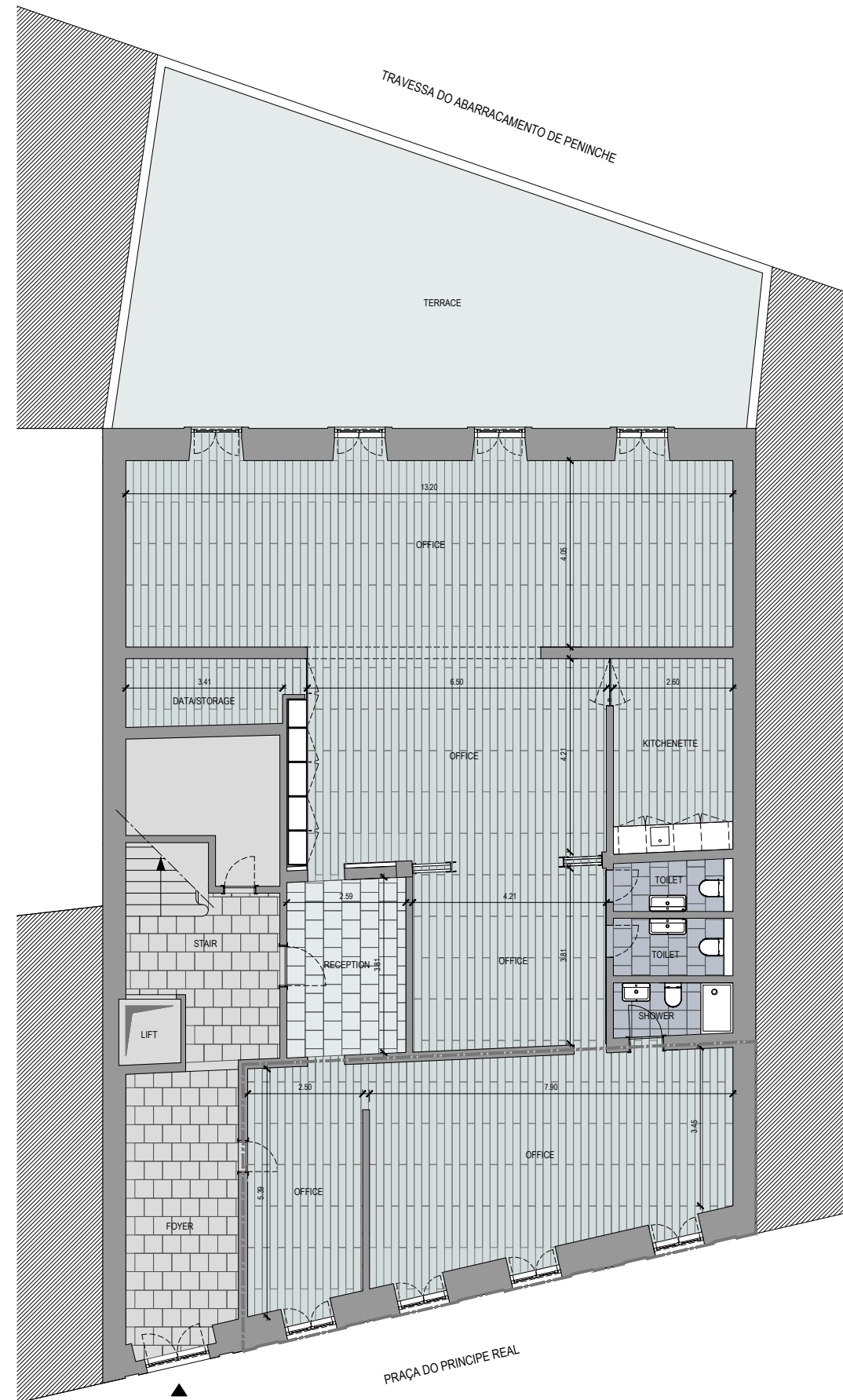
exterior area - 81,85 m<sup>2</sup>

ceiling height - 2,90 m

GLA\* - 243,63 m<sup>2</sup>



\* - GLA - Gross Leasable Area - measured by the exterior of the walls and axes of the interior separating walls. Balconies and terraces consider 25% of gross area.



limite para ocupação parcial do piso

